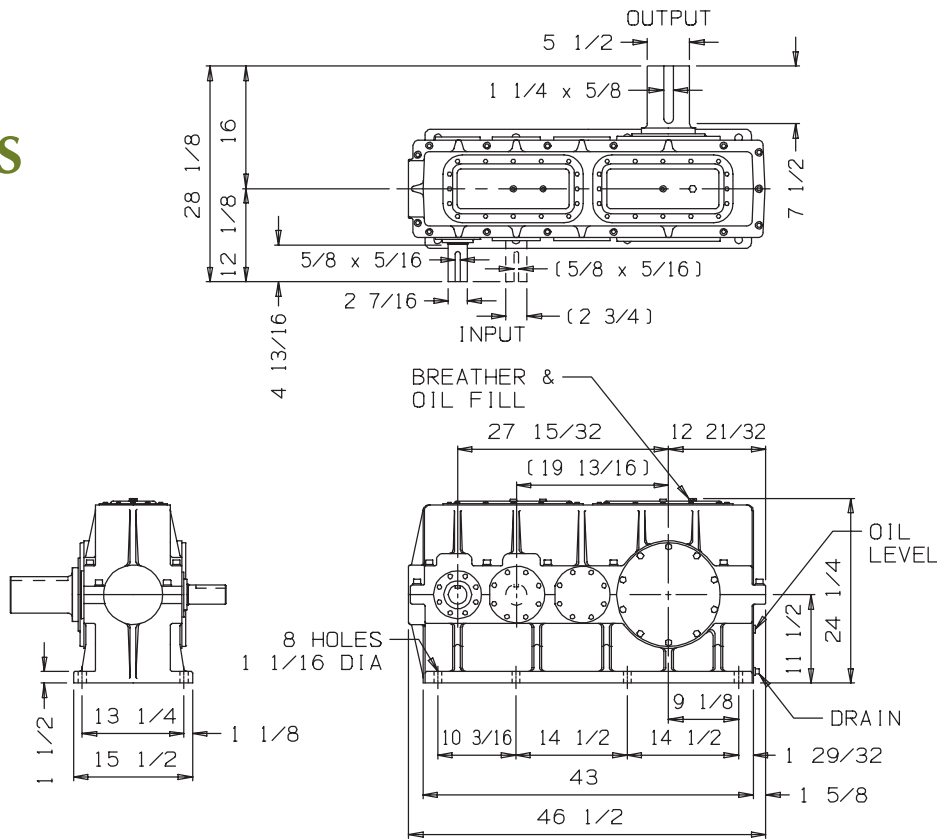


10000 SERIES

DOUBLE AND TRIPLE REDUCTION BASE TYPE GEAR DRIVES



Average Shipping Weight: 1500 lbs.

| MODEL | RATIO ² | REDUCTION ³ | RATINGS ¹ | | | | | GEARBOX ⁵ INERTIA (LB-FT ²) |
|-------|--------------------|------------------------|----------------------|--------------------|-----------------------|---|--|--|
| | | | OUTPUT (RPM) | INPUT HORSEPOWER | OUTPUT TORQUE (LB-IN) | INPUT SHAFT ⁴ OVERHUNG LOAD CAPACITY (LBS) | OUTPUT SHAFT ⁴ OVERHUNG LOAD CAPACITY (LBS) | |
| 10015 | 14.956 | DOUBLE | 117.0 | 351.3 ⁶ | 189,200 | 2200 | 18,000 | 1.86 |
| 10025 | 25.357 | DOUBLE | 69.0 | 216.8 ⁶ | 198,000 | 2500 | 20,000 | 1.03 |
| 10040 | 38.474 | DOUBLE | 45.5 | 147.8 | 204,700 | 2500 | 20,000 | .62 |
| 10060 | 59.384 | TRIPLE | 29.5 | 98.9 | 211,350 | 2000 | 20,000 | .63 |
| 10080 | 81.776 | TRIPLE | 21.4 | 73.4 | 216,100 | 2000 | 20,000 | .77 |
| 10100 | 100.681 | TRIPLE | 17.4 | 60.5 | 219,150 | 2000 | 20,000 | .58 |
| 10125 | 122.412 | TRIPLE | 14.3 | 50.3 | 221,800 | 2000 | 20,000 | .47 |
| 10150 | 152.766 | TRIPLE | 11.5 | 41.0 | 225,000 | 2000 | 20,000 | .56 |
| 10175 | 178.264 | TRIPLE | 9.8 | 35.3 | 227,100 | 2000 | 20,000 | .47 |
| 10200 | 202.346 | TRIPLE | 8.6 | 31.2 | 229,000 | 2000 | 20,000 | .41 |

NOTES

- Horsepower, torque, output speed and overhung load capacities based on 1750 rpm input speed and 1.00 Service Factor.
- Non-standard ratios available. Consult Dorris Company if desired ratio is not shown.
- Double reduction high speed shaft dimensions shown in parentheses ().
- Overhung load is measured at the midpoint of the key for the input and output shafts respectively.
- Measured at the input shaft.
- Consult Dorris Company for thermal capacity in your application.